

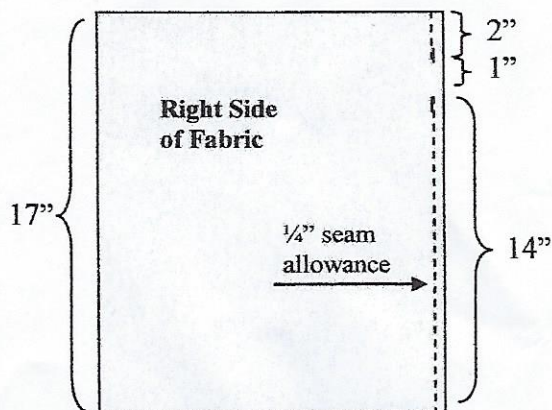
# CARITAS BAGS

**Fabric – 17” high x 30” wide**

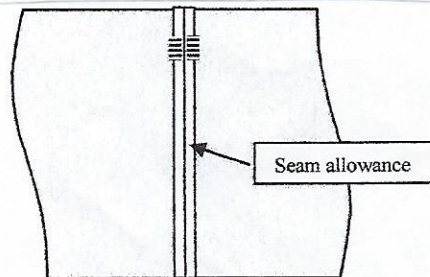
**Drawstring cord – 1 yard**

**1 Cord Lock (optional)**

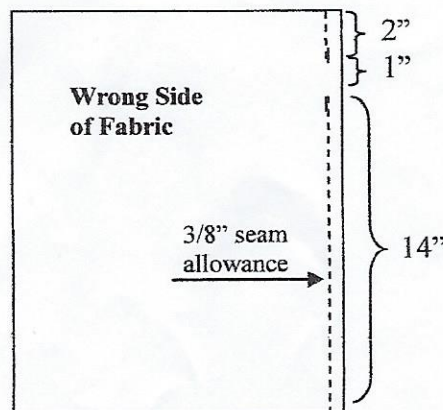
1. Cut fabric 17” x 30”.
2. Fold fabric **WRONG** sides together and sew for 2” along the side seam, back tack, leave a 1” space and continue to sew the length of the seam.



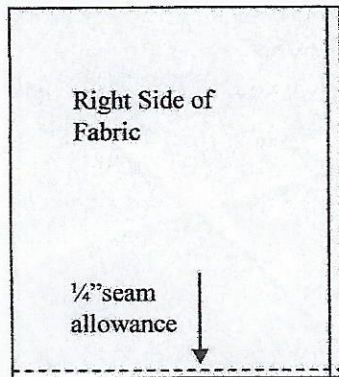
3. Press seam open and zig zag the seam allowance to the main fabric on both sides of the opening.



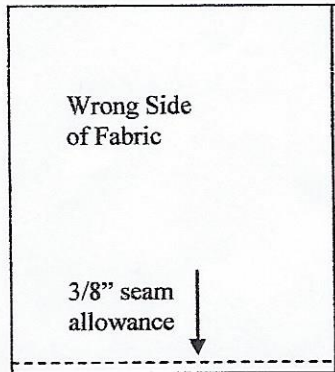
4. Turn bag with **RIGHT** sides together, press flat along seam line and stitch a  $\frac{3}{8}$ " seam allowance over the  $\frac{1}{4}$ " seam allowance. **Stop 2" down and leave a 1" opening.** Continue to finish sewing the side seam. This will make a "French seam" with all the raw edges encased.



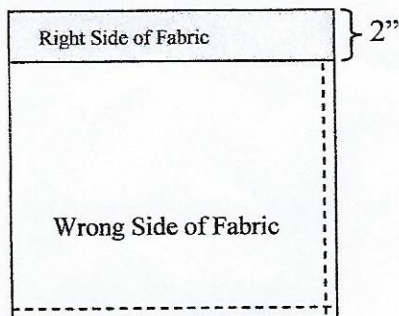
5. Press seam to one side.
6. Turn bag **right sides out** (wrong sides together) and sew along the bottom seam with a  $\frac{1}{4}$ " seam allowance.



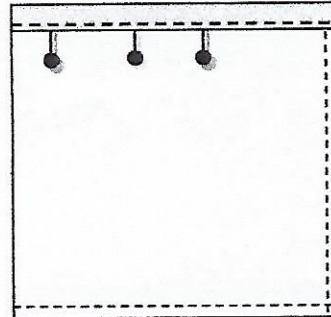
7. Turn bag **wrong side out** (right sides together) press the bottom seam flat and stitch across the bottom seam again with a  $\frac{3}{8}$ " seam allowance. This will make another "French seam" encasing all the raw edges.



8. With bag still wrong sides out, fold down the top raw edges 2" and press.



9. Fold raw edges under again to meet the pressed edge forming a one inch casing, press and pin in place.



10. Stitch around the entire top edge of the bag very close to the folded edge, making a 1" drawstring casing.
11. Turn bag right side out.
12. Attach a safety pin in the drawstring and place it through the opening that was created in the side seam of the casing. Pull the string all the way around the casing exiting where you started.
13. Thread both ends of the drawstring through the opening of the optional cord lock, and/or tie the cords together at the ends.

